

Global X AI & Innovative Technology Active ETF

3006 HKD



IMPORTANT INFORMATION

Investors should not base investment decisions on this material alone. Please refer to the Prospectus for details including the product features and the risk factors. Investment involves risks. Past performance is not indicative of future performance. There is no guarantee of the repayment of the principal. Investors should note:

- The investment objective of Global X AI & Innovative Technology Active ETF (the "Fund") is to achieve long term capital growth by primarily investing in equities of exchange-listed companies globally, which fall within the investment theme of artificial intelligence and innovative technologies as detailed below. - The Fund does not seek to track any index or benchmark, it may fail to meet its objective as a result of the Manager's selection of investment, and/or the implementation of processes which may cause the Sub-Fund to underperform as compared to other index tracking funds with a similar objective. - The Fund may be concentrated in a specific industry or sector, which may potentially more volatile than a fund with a diversified portfolio. - Investors should note that Shareholders will only receive distributions in USD and not HKD. Shareholder may have to bear the fees and charges associated with the conversion of such distribution from USD into HKD or any other currency. - Exposure to ADRs and GDRs may generate additional risks compared to a direct exposure to the underlying stocks, including the risk of non-segregation of the underlying stocks held by the depositary bank from the bank's own assets and liquidity risks. - The trading price of the Fund's unit on the SEHK is driven by secondary market trading factors, which may lead to a substantial premium or discount to the Fund's net asset value. - The Manager may at its discretion pay dividends out of the capital of the Fund. Distributions paid out of capital, represent a return of an investor's original investment or its gains and may potentially reduce the Fund's Net Asset Value per Share as well as the capital available for future investment. - The Fund may suffer from a losses or delays when recovering the securities lent out. This may potentially affect its ability to meet payment and redemption obligations. Collateral shortfalls due to inaccurate pricing or change of value of securities lent, may cause significant losses to the Fund.

FUND DETAILS¹



Stock Code	3006 (HKD)
ISIN	HK0000838232 (HKD)
Listing Date	21 Mar 2022
Ongoing Charges Over a Year ²	0.75%
Index	-
Board Lot Size	50 Units
Base Currency	USD
Trading Currency	HKD counter: HKD
Exchange	HKEX

INVESTMENT POINTS

- AI is set to revolutionize technology and productivity, enabled by breakthrough in Semiconductor technology and training techniques.
- Invest in global industry leaders in the AI and technology supply chain
- Focus on exposure to the latest technology development through active management

PERFORMANCE¹ as of 29 Aug 2025

Cumulative Return	3 Mths	6 Mths	YTD	Since Listing
FUND	14.93%	16.20%	12.88%	67.42%
INDEX	-	-	-	-

Calendar Year Return	2024	2023	2022	2021	2020
FUND (%)	42.64	47.09	-	-	-
INDEX (%)	-	-	-	-	-

TOP 10 HOLDINGS (%)⁴ as of 29 Aug 2025

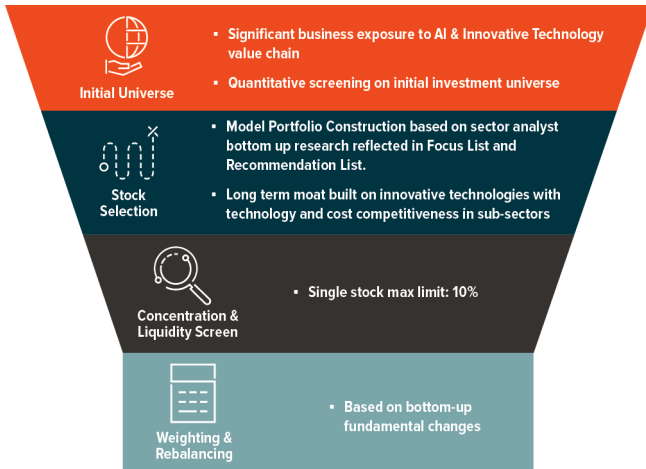
Alphabet	9.81
Meta	9.53
Microsoft	9.07
Apple	8.31
NVIDIA	7.96
TSMC	7.96
Tencent	6.53
Broadcom	3.49
Autodesk	2.58
Nintendo	2.52

Source: MAGIHK, 31 Mar 2025. ¹Past performance information is not indicative of future performance. Investors may not get back the full amount invested. The computation basis of the performance is based on the calendar year end, NAV to NAV. These figures show by how much the Sub-Fund increased or decreased in value during the calendar year shown. Performance data has been calculated in USD including ongoing charges and excluding trading costs on SEHK you might have to pay. Where no past performance is shown, there was insufficient data available in that year to provide performance. Fund inception date: 18 Mar 2022. ² The Fund adopts a single management fee structure, whereby a single flat fee will be paid out of the assets of the Fund to cover all of the costs, fees and expenses of the Fund. The ongoing charges figure is an annualised figure based on the ongoing expenses of the Fund, expressed as a percentage of the Fund's average net asset value over the same period. It may be different upon actual operation of the Fund and may vary from year to year. As the Fund adopts a single management fee structure, the ongoing charges of the Fund will be equal to the amount of the single management fee, which is capped at 0.75% of the average Net Asset Value of the Fund. Any ongoing expenses exceeding 0.75% of the average Net Asset Value of the Fund will be borne by the Manager and will not be charged to the Fund. Please refer to the Product Key Facts and the Prospectus for further details. ³ Holdings are subject to change.

GLOBAL X AI & INNOVATIVE TECHNOLOGY ACTIVE ETF

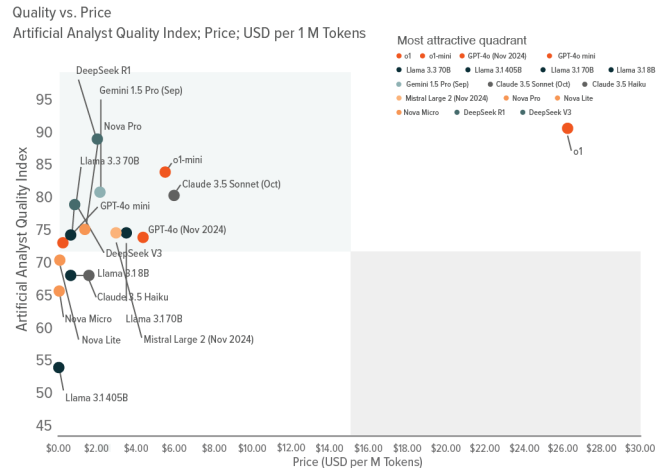


ACTIVE STOCK SELECTION PROCESS



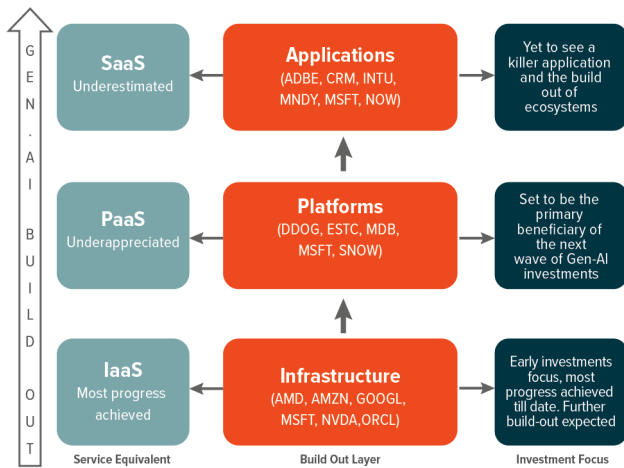
Source: Mirae Asset, 2025

LLM PRICE PERFORMANCE CONTINUE TO IMPROVE WHICH DRIVES ADOPTION



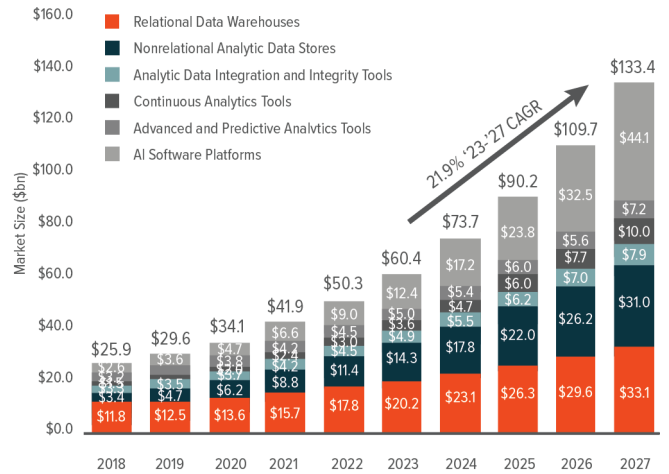
Source: Artificial Analysis, 2025

GEN-AI BUILD-OUT



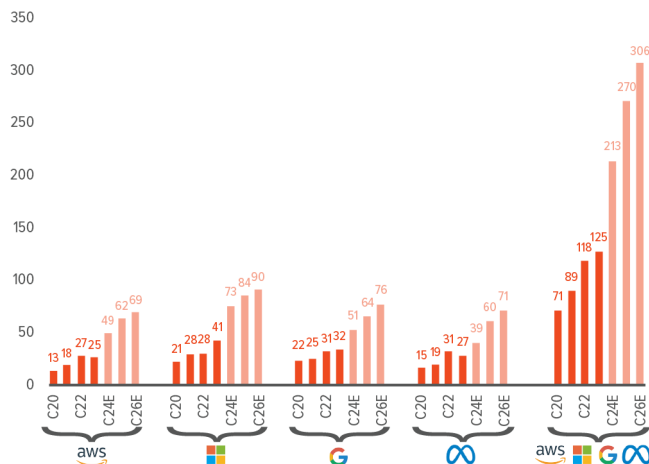
Source: Goldman Sachs, 2024

AI-ENABLED CLOUD SERVICES TAM TO REACH \$133BN BY 2027



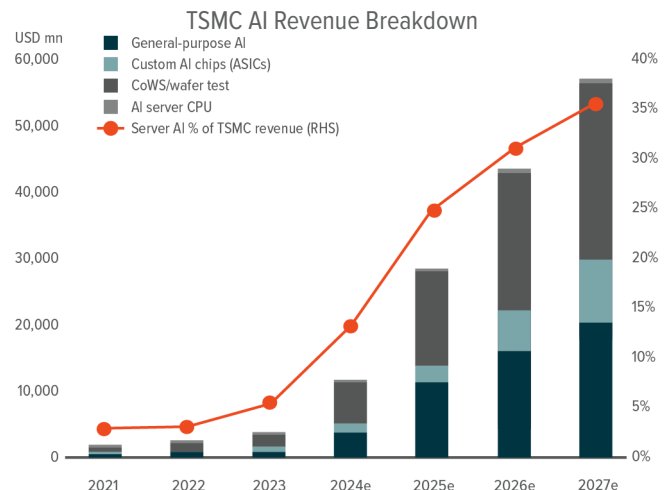
Source: IDC, Morgan Stanley, 2024

HYPERSCALERS REMAIN COMMITTED TO SIGNIFICANT CAPEX INCREASE



Source: Goldman Sachs, 2025

TSMC IS THE KEY FOUNDRY FOR ALL AI CHIPS



Source: Morgan Stanley, 2025