

# Global X AI & Innovative Technology Active ETF

## 3006 HKD



### IMPORTANT INFORMATION

Investors should not base investment decisions on this material alone. Please refer to the Prospectus for details including the product features and the risk factors. Investment involves risks. Past performance is not indicative of future performance. There is no guarantee of the repayment of the principal. Investors should note:

- The investment objective of Global X AI & Innovative Technology Active ETF (the "Fund") is to achieve long term capital growth by primarily investing in equities of exchange-listed companies globally, which fall within the investment theme of artificial intelligence and innovative technologies as detailed below. - The Fund does not seek to track any index or benchmark, it may fail to meet its objective as a result of the Manager's selection of investment, and/or the implementation of processes which may cause the Sub-Fund to underperform as compared to other index tracking funds with a similar objective. - The Fund may be concentrated in a specific industry or sector, which may potentially more volatile than a fund with a diversified portfolio. - Investors should note that Shareholders will only receive distributions in USD and not HKD. Shareholder may have to bear the fees and charges associated with the conversion of such distribution from USD into HKD or any other currency. - Exposure to ADRs and GDRs may generate additional risks compared to a direct exposure to the underlying stocks, including the risk of non-segregation of the underlying stocks held by the depositary bank from the bank's own assets and liquidity risks. - The trading price of the Fund's unit on the SEHK is driven by secondary market trading factors, which may lead to a substantial premium or discount to the Fund's net asset value. - The Manager may at its discretion pay dividends out of the capital of the Fund. Distributions paid out of capital, represent a return of an investor's original investment or its gains and may potentially reduce the Fund's Net Asset Value per Share as well as the capital available for future investment. - The Fund may suffer from a losses or delays when recovering the securities lent out. This may potentially affect its ability to meet payment and redemption obligations. Collateral shortfalls due to inaccurate pricing or change of value of securities lent, may cause significant losses to the Fund.

### FUND DETAILS<sup>1</sup>



Stock Code	3006 (HKD)
ISIN	HK0000838232 (HKD)
Listing Date	21 Mar 2022
Ongoing Charges Over a Year <sup>2</sup>	0.75%
Index	-
Board Lot Size	50 Units
Base Currency	USD
Trading Currency	HKD counter: HKD
Exchange	HKEX

### INVESTMENT POINTS

- AI is set to revolutionize technology and productivity, enabled by breakthrough in Semiconductor technology and training techniques.
- Invest in global industry leaders in the AI and technology supply chain
- Focus on exposure to the latest technology development through active management

### PERFORMANCE<sup>1</sup>

Cumulative Return	3 Mths	6 Mths	YTD	Since Listing
FUND	20.13%	6.79%	6.79%	58.39%
INDEX	-	-	-	-

Calendar Year Return	2024	2023	2022	2021	2020
FUND (%)	42.64	47.09	-	-	-
INDEX (%)	-	-	-	-	-

### TOP 10 HOLDINGS (%)<sup>3</sup>

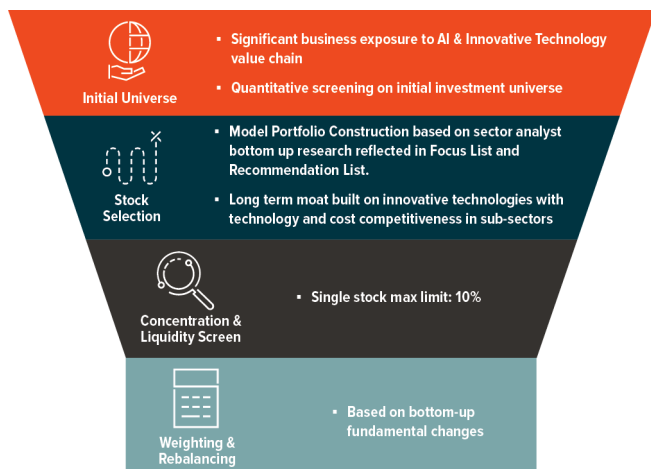
Meta	10.16
TSMC	9.94
Microsoft	9.41
Alphabet	8.57
Apple	7.74
NVIDIA	7.63
Tencent	5.78
Broadcom	3.33
Nintendo	2.82
Autodesk	2.82

Source: MAGIHK, 31 Mar 2025. <sup>1</sup>Past performance information is not indicative of future performance. Investors may not get back the full amount invested. The computation basis of the performance is based on the calendar year end, NAV to NAV. These figures show by how much the Sub-Fund increased or decreased in value during the calendar year shown. Performance data has been calculated in USD including ongoing charges and excluding trading costs on SEHK you might have to pay. Where no past performance is shown, there was insufficient data available in that year to provide performance. Fund inception date: 18 Mar 2022. <sup>2</sup> The Fund adopts a single management fee structure, whereby a single flat fee will be paid out of the assets of the Fund to cover all of the costs, fees and expenses of the Fund. The ongoing charges figure is an annualised figure based on the ongoing expenses of the Fund, expressed as a percentage of the Fund's average net asset value over the same period. It may be different upon actual operation of the Fund and may vary from year to year. As the Fund adopts a single management fee structure, the ongoing charges of the Fund will be equal to the amount of the single management fee, which is capped at 0.75% of the average Net Asset Value of the Fund. Any ongoing expenses exceeding 0.75% of the average Net Asset Value of the Fund will be borne by the Manager and will not be charged to the Fund. Please refer to the Product Key Facts and the Prospectus for further details. <sup>3</sup> Holdings are subject to change.

# GLOBAL X AI & INNOVATIVE TECHNOLOGY ACTIVE ETF



## ACTIVE STOCK SELECTION PROCESS



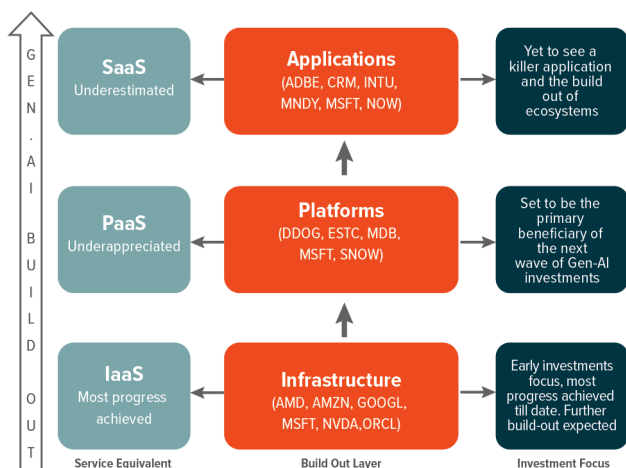
Source: Mirae Asset, 2025

## LLM PRICE PERFORMANCE CONTINUE TO IMPROVE WHICH DRIVES ADOPTION



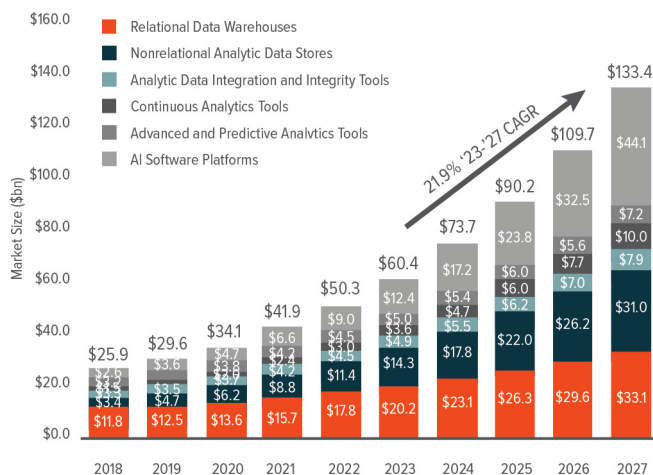
Source: Artificial Analysis, 2025

## GEN-AI BUILD-OUT



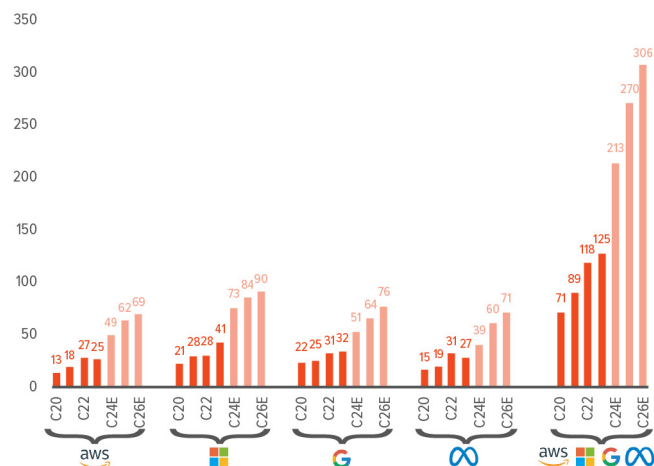
Source: Goldman Sachs, 2024

## AI-ENABLED CLOUD SERVICES TAM TO REACH \$133BN BY 2027



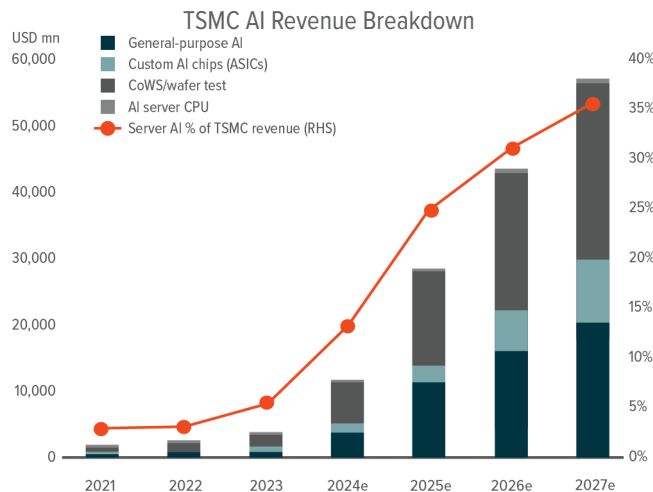
Source: IDC, Morgan Stanley, 2024

## HYPERSCALERS REMAIN COMMITTED TO SIGNIFICANT CAPEX INCREASE



Source: Goldman Sachs, 2025

## TSMC IS THE KEY FOUNDRY FOR ALL AI CHIPS



Source: Morgan Stanley, 2025

# Important Risks and Information

---

This document is provided for information and illustrative purposes and is intended for your use only. It is not a solicitation, offer or recommendation to buy or sell any security or other financial instrument. The information contained in this document has been provided as a general market commentary only and does not constitute any form of regulated financial advice, legal, tax or other regulated service.

The views and information discussed or referred in this document are Data as of the date of publication. Certain of the statements contained in this document are statements of future expectations and other forward-looking statements. Views, opinions and estimates may change without notice and are based on a number of assumptions which may or may not eventuate or prove to be accurate. Actual results, performance or events may differ materially from those in such statements.

Investment involves risk. Past performance is not indicative of future performance. It cannot be guaranteed that the performance of the funds will generate a return and there may be circumstances where no return is generated or the amount invested is lost. It may not be suitable for persons unfamiliar with the underlying securities or who are unwilling or unable to bear the risk of loss and ownership of such investment. Before making any investment decision, investors should read the Prospectus for details and the risk factors. Investors should ensure they fully understand the risks associated with the funds and should also consider their own investment objective and risk tolerance level. Investors are advised to seek independent professional advice before making any investment.

Information and opinions presented in this document have been obtained or derived from sources which in the opinion of Mirae Asset Global Investments (Hong Kong) Limited ("MAGIHK") are reliable, but we make no representation as to their accuracy or completeness. We accept no liability for a loss arising from the use of this document.

Products, services and information may not be available in your jurisdiction and may be offered by affiliates, subsidiaries and/or distributors of MAGIHK as stipulated by local laws and regulations. This document is not directed to any person in any jurisdiction where availability of this document is prohibited.

Persons in respect of whom such prohibitions apply or persons other than those specified above must not access this document. It is your responsibility to be aware of and to observe all applicable laws and regulations of any relevant jurisdiction. Please consult with your professional adviser for further information on the availability of products and services within your jurisdiction.

This document is issued by MAGIHK (Licensed by the Securities and Futures Commission for Types 1, 4 and 9 regulated activities under the Securities and Futures Ordinance). This document has not been reviewed by the Securities and Futures Commission or the applicable regulator in the jurisdiction and no part of this publication may be reproduced in any form, or referred to in any other publication, without express written permission of MAGIHK.

Copyright © 2025 Mirae Asset Global Investments. All rights reserved.