

MIRAE ASSET SUSTAINABLE ASIA PACIFIC EQUITY FUND

SHARE CLASS A IN USD



MIRAE ASSET
Global Investments

INVESTMENT OBJECTIVE

The primary objective of the Fund is to achieve long term growth in the share price through capital appreciation, measured in US Dollars, of the underlying equity portfolio which promotes environmental, social and governance (ESG) criteria.

The Principal Investment Manager will seek to achieve the objective of the subfund by investing mainly in equities and equity related securities of companies domiciled in or exercising a large portion of their economic activity in countries of Asia Pacific developed countries and Asia Pacific emerging countries.

MORNINGSTAR RATING™

★★★★

FUND CHARACTERISTICS

Total Fund Size (M)	USD 30.75
Net Asset Value	USD 20.71

KEY FACTS

Benchmark	MSCI AC Asia Pacific ex Japan Index
Fund Structure	Luxembourg SICAV - UCITS compliant
Morningstar Category TM†	Asia ex-Japan Equity
ISIN Code	LU0336300859
Bloomberg Ticker	MIRAPAU LX
Currency of the Share Class	USD
Other Dealing Currencies	EUR
Fund Launch Date	2008-07-22
Share Class Launch Date	2009-09-01
Valuation	Daily

SUBSCRIPTION DETAILS

Subscription Fee	Up to 5.25%
Redemption Fee	None
Switching Fee	Up to 1.00%
Management Fee	1.5% p.a.
Min Initial Investment	USD 2,500
Min Subsequent Investment	None

FUND MANAGER

Lead Portfolio Manager: Rahul Chadha

Co-Portfolio Manager: Phil S. Lee

Assistant Portfolio Manager: Celia Qiu

IMPORTANT INFORMATION

Investors should not base on this document alone to make investment decision. Please refer to the Hong Kong offering documents for details including the product features and the risk factors. Investment involves risks. There is no guarantee of the repayment of principal. Before you decide to invest, you should make sure the intermediary has explained to you that the Fund is suitable to you. Investor should note:

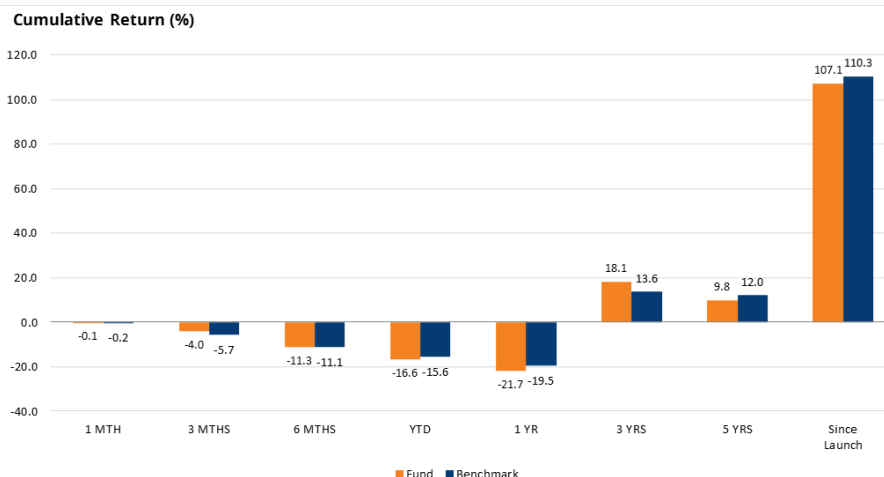
- Mirae Asset Sustainable Asia Pacific Equity Fund (the "Fund") mainly invests in equities and equity-related securities of companies domiciled in or exercising a large portion of their economic activity in the developed and emerging countries of the Asia Pacific region (ex-Japan).
- The Fund invests in emerging markets should be regarded as having higher political, regulatory, volatility, liquidity, economic and foreign currency risks than a fund which invests in developed markets.
- The Fund invests in the Asia Pacific region (ex-Japan) should be regarded as having higher concentration risks than a fund following a more diversified policy.
- The expected maximum level of leverage arising from the use of financial derivative instruments calculated using the commitment approach is 100% of the sub-fund's NAV.
- The Fund's performance may differ significantly from the performance of funds with similar investment universe but without applying ESG criteria. The Fund's portfolio may also be concentrated in ESG-related securities and its value may become more volatile than that of a fund investing in a more diversified portfolio.
- There is a lack of standard taxonomy in ESG evaluation methodologies and the way in which different funds that use ESG criteria will apply such criteria may vary. There can be no guarantee that the Principle Investment Manager will correctly assess the ESG characteristics of the Fund's investment.

PERFORMANCE

Cumulative Return (%)	1 MTH	3 MTHS	6 MTHS	YTD	1 YR	3 YRS	5 YRS	Since Launch
Fund	-0.1	-4.0	-11.3	-16.6	-21.7	18.1	9.8	107.1
Benchmark	-0.2	-5.7	-11.1	-15.6	-19.5	13.6	12.0	110.3

Calendar Year Return (%)	2016	2017	2018	2019	2020	2021
Fund	-3.0	46.6	-22.7	19.4	29.7	-0.8
Benchmark	7.1	37.3	-13.7	19.5	22.8	-2.7

PERFORMANCE CHART



Effective from 28 January 2022, the Mirae Asset Asia Pacific Equity Fund was renamed Mirae Asset Sustainable Asia Pacific Equity Fund and was converted to an Article 8 UCITS fund under the EU Sustainable Finance Disclosure Regulation ("SFDR"). The fund is also classified as an ESG fund pursuant to the circular issued by the Hong Kong Securities and Futures Commission on 29 June 2021. The Mirae Asset Sustainable Asia Pacific Equity Fund was awarded the "Towards Sustainability" label on 4 April 2022. The "Towards Sustainability" label is a quality standard for sustainable financial products, including investment funds, initiated under the Belgian financial sector federation Febeffin. A clear set of requirements, above and beyond that of regulatory requirements, including acceptable sustainable investing strategies, exclusion criteria and disclosure transparency need to be met in order to be awarded the label. For information on the label please refer to the website [towardsustainability.be](https://www.towardsustainability.be).

MIRAE ASSET SUSTAINABLE ASIA PACIFIC EQUITY FUND

SHARE CLASS A IN USD

COUNTRY ALLOCATION**

	Fund (%)	Benchmark (%)
China	30.6	30.2
India	25.4	13.6
Korea	13.0	10.9
Hong Kong	7.6	6.1
Taiwan	4.4	13.7
Vietnam	4.2	0.0
Malaysia	3.0	1.4
Singapore	2.6	3.0
Australia	2.6	16.3
Others	4.8	4.8
Cash	1.8	0.0

SECTOR ALLOCATION**

	Fund (%)	Benchmark (%)
Consumer Discretionary	32.1	13.6
Financials	20.8	22.3
Information Technology	12.3	18.6
Materials	9.1	8.1
Communication Services	5.8	8.8
Health Care	4.6	5.2
Industrials	4.6	6.5
Consumer Staples	3.9	5.3
Real Estate	2.7	4.2
Energy	2.4	4.3
Utilities	0.0	3.1
Cash	1.8	0.0

OTHER AVAILABLE SHARE CLASSES

Share Class	ISIN Code	Bloomberg Ticker
Class A EUR	LU0336300933	MIRAPAE LX

TOP TEN HOLDINGS

Name	Country	Sector	Fund (%)	Benchmark (%)
Alibaba Group Holding Ltd.	China	Consumer Discretionary	4.4	2.7
Tencent Holdings Ltd.	China	Communication Services	4.0	3.8
Taiwan Semiconductor Manufacturing Co., Ltd.	Taiwan	Information Technology	3.9	5.9
ICICI Bank Limited	India	Financials	3.9	0.8
Standard Chartered PLC	Hong Kong	Financials	3.1	0.0
Meituan Class B	China	Consumer Discretionary	3.0	1.4
IHH Healthcare Bhd.	Malaysia	Health Care	3.0	0.0
JD.com, Inc. Class A	China	Consumer Discretionary	2.9	0.9
Samsung Electronics Co., Ltd.	Korea	Information Technology	2.9	3.6
Phu Nhuan Jewelry JSC	Vietnam	Consumer Discretionary	2.8	0.0

For more information, please contact us at **+852 2295 1500** or by e-mail to asiasales@miraeasset.com

Mirae Asset Global Investments (Hong Kong) Limited | Address: Room 1101, 11/F, Lee Garden Three, 1 Sunning Road, Causeway Bay, Hong Kong | Website: <https://www.am.miraeasset.com/>

Source: FactSet, Bloomberg and Mirae Asset Global Investments (HK) Limited data as of 31 August 2022. All performance numbers are net of fees, NAV to NAV, in USD with dividends reinvested. Fund: The fund inception date was 22 July 2008 whilst Class A (USD) was launched on 1 September 2009. Benchmark: MSCI AC Asia Pacific ex Japan Index. The benchmark is a gross return index that includes reinvestment of dividends/income. †© 2022 Morningstar, Inc. Morningstar rating as of 31 March 2022. All rights reserved. The information contained herein: (1) is proprietary to Morningstar and/or its content providers; (2) may not be copied or distributed; and (3) is not warranted to be accurate, complete, or timely. Neither Morningstar nor its content providers are responsible for any damages or losses arising from any use of this information. Past performance is no guarantee of future results. **Due to rounding, the sum may not equal 100%.

DISCLAIMER

Certain information contained in this document is compiled from third party sources. Whilst Mirae Asset Global Investments (Hong Kong) Limited ("Mirae Asset HK") has, to the best of its endeavor, ensured that such information is accurate, complete and up-to-date, and has taken care in accurately reproducing the information, it shall have no responsibility or liability what so ever for the accuracy of such information or any use or reliance thereof. Mirae Asset HK accepts no liability for any loss or damage of any kind resulting out of the unauthorised use of this document. The information contained in this document is for information purposes only and does not constitute any recommendation, offer or solicitation to buy, sell or subscribe to any securities or financial instruments in any jurisdiction. The Fund is a sub fund of Mirae Asset Global Discovery Fund (Company), a Luxembourg SICAV. Investment involves risk. It cannot be guaranteed that the performance of the Fund will generate a return and there may be circumstances where no return is generated or the amount invested is lost. Past performance is not indicative of future performance. Investors should ensure they fully understand the risks associated with the Fund and should also consider their own investment objective and risk tolerance level. Investors are advised to seek independent professional advice before making any investments. References to particular sectors, securities or companies are for general information and illustrative purposes only and are not recommendations to buy or sell a security or an indication of Mirae Asset HK's holdings at any one time. Hong Kong: Before making any investment decision to invest in the Fund, Hong Kong investors should read the Hong Kong Offering documents (i.e. Prospectus, the Information for Hong Kong Investors, Product Key Facts) for details and the risk factors. This document is issued by Mirae Asset HK and has not been reviewed by the Securities and Futures Commission. Singapore: Before making any investment decision to invest in the Fund, Singapore investors should read the Prospectus and information memorandum for investors in Singapore and for details and the risk factors. The Company is a Luxembourg registered UCITS which is not authorized or recognized by the Monetary Authority of Singapore and is not allowed to be offered to the retail public. Accordingly, this factsheet and any other document or material in connection with the offer or sale, or invitation for subscription or purchase, of shares of the Fund may not be circulated or distributed, nor may shares be offered or sold, or be made the subject of an invitation for subscription or purchase, whether directly or indirectly, to persons in Singapore other than (i) to an institutional investor under Section 304 of the Securities and Futures Act, (ii) to a relevant person pursuant to Section 305(1), or any person pursuant to Section 305(2), and in accordance with the conditions specified in Section 305 of the Securities and Futures Act, or (iii) otherwise pursuant to, and in accordance with the conditions of, any other applicable provision of the Securities and Futures Act. This document is issued by Mirae Asset HK and has not been reviewed by the Monetary Authority of Singapore.