

# MIRAE ASSET ESG CHINA SECTOR LEADER EQUITY FUND

SHARE CLASS A IN USD

## INVESTMENT OBJECTIVE

The primary objective of the Mirae Asset ESG China Sector Leader Equity Fund ("the Fund") is to achieve long term growth in the share price through capital appreciation, measured in US Dollars, of the underlying equity portfolio. The Fund promotes environmental, social and governance (ESG) criteria.

The Principal Investment Manager will seek to achieve the objective of the Fund by investing mainly in equities and equity related securities (such as but not limited to shares and depository receipts) of sector leading companies domiciled in or exercising a large portion of their business in China and Hong Kong.

## MORNINGSTAR RATING™

★★★★

## FUND CHARACTERISTICS

Total Fund Size (M)	USD 3.00
Net Asset Value	USD 18.03

## KEY FACTS

Benchmark	MSCI China All Shares Index
Fund Structure	Luxembourg SICAV - UCITS compliant
Morningstar Category TMT	Greater China Equity
ISIN Code	LU0336295752
Bloomberg Ticker	MIRCSLA LX
Currency of the Share Class	USD
Other Dealing Currencies	EUR
Fund Launch Date	2008-07-22
Share Class Launch Date	2009-09-02
Valuation	Daily

## SUBSCRIPTION DETAILS

Subscription Fee	Up to 5.25%
Redemption Fee	None
Switching Fee	Up to 1.00%
Management Fee	1.5% p.a.
Min Initial Investment	USD 2,500
Min Subsequent Investment	None

## FUND MANAGER

Lead Portfolio Manager: Daniel Zhou

Co-Portfolio Manager: Phil S. Lee

Assistant Portfolio Manager: Edward Chan

## IMPORTANT INFORMATION

Investors should not base on this document alone to make investment decision. Please refer to the Hong Kong offering documents for details including the product features and the risk factors. Investment involves risks. There is no guarantee of the repayment of principal. Before you decide to invest, you should make sure the intermediary has explained to you that the Fund is suitable to you. Investor should note:

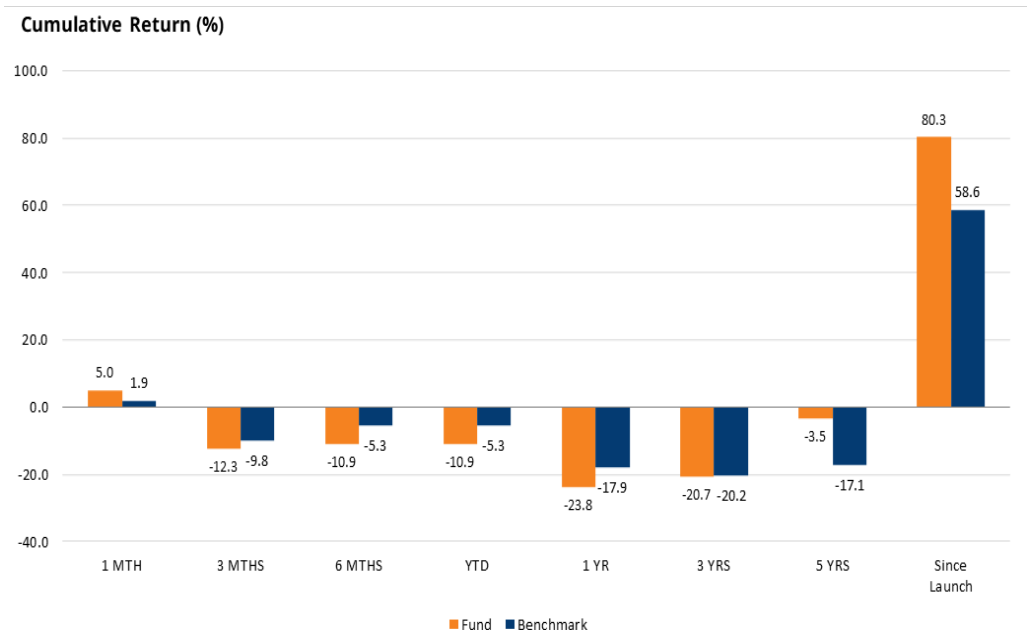
- Mirae Asset ESG China Sector Leader Equity Fund (the "Fund") mainly invests in equities and equity-related securities of sector leading companies domiciled in or exercising a large portion of their economic activity in China and Hong Kong.
- The Fund invests in emerging markets should be regarded as having higher political, regulatory, volatility, liquidity, economic and foreign currency risks than a fund which invests in developed markets.
- The Fund invests in China and Hong Kong should be regarded as having higher concentration risks than a fund following a more diversified policy.
- The expected maximum level of leverage arising from the use of financial derivative instruments calculated using the commitment approach is 100% of the fund's NAV.
- The Fund's performance may differ significantly from the performance of funds with similar investment universe but without applying ESG criteria. The Fund's portfolio may also be concentrated in ESG-related securities and its value may become more volatile than that of a fund investing in a more diversified portfolio.
- There is a lack of standard taxonomy in ESG evaluation methodologies and the way in which different funds that use ESG criteria will apply such criteria may vary. There can be no guarantee that the Principle Investment Manager will correctly assess the ESG characteristics of the Fund's investment.
- Applying ESG criteria in the investment process may result in the exclusion of securities in which the Fund might otherwise invest. Implementation of the Fund's exclusion policy may result in the Fund forgoing opportunities to buy certain securities when it might otherwise be advantageous to do so.

## PERFORMANCE

Cumulative Return (%)	1 MTH	3 MTHS	6 MTHS	YTD	1 YR	3 YRS	5 YRS	Since Launch
Fund	5.0	-12.3	-10.9	-10.9	-23.8	-20.7	-3.5	80.3
Benchmark	1.9	-9.8	-5.3	-5.3	-17.9	-20.2	-17.1	58.6

Calendar Year Return (%)	2016	2017	2018	2019	2020	2021	2022
Fund	-9.2	59.2	-23.1	32.1	80.0	-20.9	-22.9
Benchmark	1.1	52.1	-18.1	22.4	28.2	-12.8	-23.5

## PERFORMANCE CHART



Effective 30 January 2023, the fund was converted to SFDR Article 8 UCITS fund and is classified as an ESG fund by the Hong Kong Securities and Futures Commission. The name of the fund was amended to include "ESG".

# MIRAE ASSET ESG CHINA SECTOR LEADER EQUITY FUND

SHARE CLASS A IN USD

**SECTOR ALLOCATION\*\***

	Fund (%)	Benchmark (%)
Industrials	23.0	9.7
Consumer Discretionary	19.9	19.6
Communication Services	10.9	12.5
Financials	9.8	16.9
Real Estate	9.5	2.6
Consumer Staples	5.6	9.0
Information Technology	4.8	10.4
Utilities	4.2	3.1
Health Care	4.1	6.7
Materials	3.3	6.6
Energy	2.0	3.0
Cash	3.0	0.0

**MARKET CAPITALIZATION ALLOCATION\*\***

	Fund (%)	Benchmark (%)
Mega Cap (> USD 100B)	23.5	20.2
Large Cap 2 (USD 50B - 100B)	0.0	9.6
Large Cap 1 (USD 10B - 50B)	65.5	40.6
Mid Cap (USD 2B - 10B)	8.0	28.3
Small Cap (USD < 2B)	0.0	1.4
Cash	3.0	0.0

**OTHER AVAILABLE SHARE CLASSES**

Share Class	ISIN Code	Bloomberg Ticker
Class A EUR	LU0336295836	MIRCSAE LX

**TOP TEN HOLDINGS**

Name	Country	Sector	Fund (%)	Benchmark (%)
BYD Company Limited Class H	China	Consumer Discretionary	7.4	1.5
Tencent Holdings Ltd.	China	Communication Services	7.1	8.0
Alibaba Group Holding Limited	China	Consumer Discretionary	5.7	5.2
Kweichow Moutai Co., Ltd. Class A	China	Consumer Staples	5.6	2.7
Jiangsu Hengli Hydraulic Co., Ltd. Class A	China	Industrials	5.2	0.1
Contemporary Amperex Technology Co., Ltd. Class A	China	Industrials	5.2	1.3
China Resources Land Limited	China	Real Estate	4.8	0.4
LONGi Green Energy Technology Co., Ltd. Class A	China	Information Technology	4.8	0.3
China Resources Mixc Lifestyle Services Ltd.	China	Real Estate	4.7	0.1
Guangdong Kinlong Hardware Products Co., Ltd. Class A	China	Industrials	4.7	0.0

For more information, please contact us at **+852 2295 1500** or by e-mail to [asiasales@miraeasset.com](mailto:asiasales@miraeasset.com)

**Mirae Asset Global Investments (Hong Kong) Limited | Address: Room 1101, 11/F, Lee Garden Three, 1 Sunning Road, Causeway Bay, Hong Kong | Website: <https://www.am.miraeasset.com/>**

Source: FactSet, Bloomberg, MSCI and Mirae Asset Global Investments, data as of 30 June 2023. All performance numbers are net of fees, NAV to NAV, in USD with dividends reinvested. The fund inception date was 22 July 2008 whilst Class A (USD) was launched on 2 September 2009. Benchmark: MSCI China All Shares Index effective 10 August 2020. From 1 July 2017 to 9 August 2020, benchmark was MSCI China 10/40 Index (Gross) USD. Before 1 July 2017, benchmark was MSCI China Index. Morningstar rating as of 30 June 2023. 1© 2023 Morningstar, Inc. All rights reserved. The information contained herein: (1) is proprietary to Morningstar and/or its content providers; (2) may not be copied or distributed; and (3) is not warranted to be accurate, complete, or timely. Neither Morningstar nor its content providers are responsible for any damages or losses arising from any use of this information. Past performance is no guarantee of future results. \*\*Due to rounding, the sum may not equal 100%.

**DISCLAIMER**

Certain information contained in this document is compiled from third party sources. Whilst Mirae Asset Global Investments (Hong Kong) Limited ("Mirae Asset HK") has, to the best of its endeavor, ensured that such information is accurate, complete and up-to-date, and has taken care in accurately reproducing the information, it shall have no responsibility or liability what so ever for the accuracy of such information or any use or reliance thereof. Mirae Asset HK accepts no liability for any loss or damage of any kind resulting out of the unauthorised use of this document. The information contained in this document is for information purposes only and does not constitute any recommendation, offer or solicitation to buy, sell or subscribe to any securities or financial instruments in any jurisdiction. The Fund is a sub fund of Mirae Asset Global Discovery Fund (Company), a Luxembourg SICAV. Investment involves risk. It cannot be guaranteed that the performance of the Fund will generate a return and there may be circumstances where no return is generated or the amount invested is lost. Past performance is not indicative of future performance. Investors should ensure they fully understand the risks associated with the Fund and should also consider their own investment objective and risk tolerance level. Investors are advised to seek independent professional advice before making any investments. References to particular sectors, securities or companies are for general information and illustrative purposes only and are not recommendations to buy or sell a security or an indication of Mirae Asset HK's holdings at any one time.

Hong Kong: Before making any investment decision to invest in the Fund, Hong Kong investors should read the Hong Kong Offering documents (i.e. Prospectus, the Information for Hong Kong Investors, Product Key Facts) for details and the risk factors. This document is issued by Mirae Asset HK and has not been reviewed by the Securities and Futures Commission.

Singapore: Before making any investment decision to invest in the Fund, Singapore investors should read the Prospectus and information memorandum for investors in Singapore and for details and the risk factors. The Company is a Luxembourg registered UCITS which is not authorized or recognized by the Monetary Authority of Singapore and is not allowed to be offered to the retail public. Accordingly, this factsheet and any other document or material in connection with the offer or sale, or invitation for subscription or purchase, of shares of the Fund may not be circulated or distributed, nor may shares be offered or sold, or be made the subject of an invitation for subscription or purchase, whether directly or indirectly, to persons in Singapore other than (i) to an institutional investor under Section 304 of the Securities and Futures Act, (ii) to a relevant person pursuant to Section 305(1), or any person pursuant to Section 305(2), and in accordance with the conditions specified in Section 305 of the Securities and Futures Act, or (iii) otherwise pursuant to, and in accordance with the conditions of, any other applicable provision of the Securities and Futures Act. This document is issued by Mirae Asset HK and has not been reviewed by the Monetary Authority of Singapore.

Certain information contained herein (the "Information") is sourced from/copyright of MSCI Inc., MSCI ESG Research LLC, or their affiliates ("MSCI"), or information providers (together the "MSCI Parties") and may have been used to calculate scores, signals, or other indicators. The Information is for internal use only and may not be reproduced or disseminated in whole or part without prior written permission. The Information may not be used for, nor does it constitute, an offer to buy or sell, or a promotion or recommendation of, any security, financial instrument or product, trading strategy, or index, nor should it be taken as an indication or guarantee of any future performance. Some funds may be based on or linked to MSCI indexes, and MSCI may be compensated based on the fund's assets under management or other measures. MSCI has established an information barrier between index research and certain Information. None of the Information in and of itself can be used to determine which securities to buy or sell or when to buy or sell them. The Information is provided "as is" and the user assumes the entire risk of any use it may make or permit to be made of the Information. No MSCI Party warrants or guarantees the originality, accuracy and/or completeness of the Information and each expressly disclaims all express or implied warranties. No MSCI Party shall have any liability for any errors or omissions in connection with any Information herein, or any liability for any direct, indirect, special, punitive, consequential or any other damages (including lost profits) even if notified of the possibility of such damages.